

Configuration of docuteam packer

Docuteam Community Day 2017
Swiss Innovation Park – Bienne/Biel

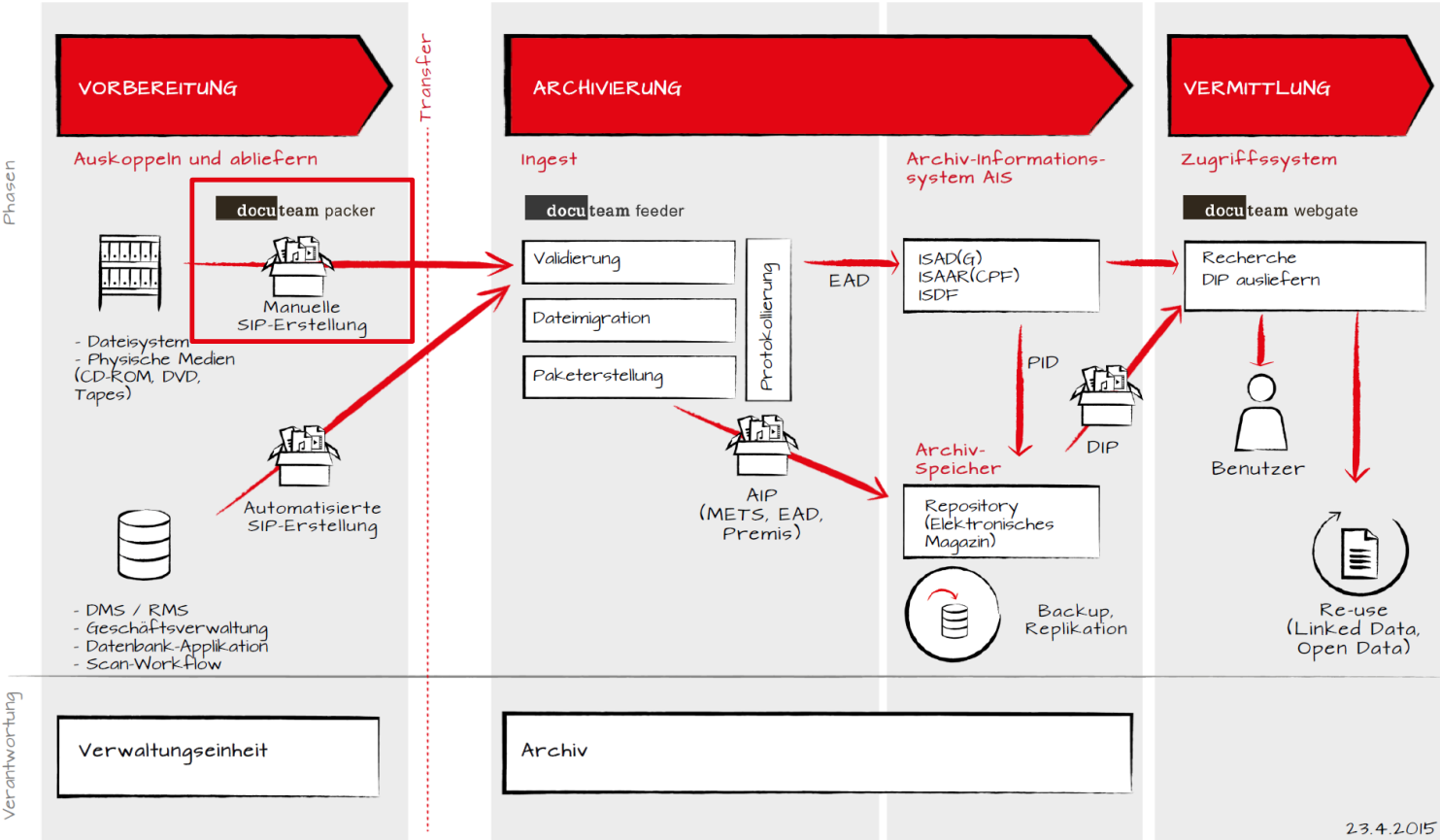
Thomas Bernhart, Frédéric Noyer
26.10.2017

Goals

You know how to...

- adapt the metadata model
- adapt field labels
- configure docuteam packer.

What is docuteam packer?



Configuration of packer

- levels.xml
- Translations
- docuteamPacker.properties

levels.xml

```
docuteam packer.app/Contents/docuteam  
packer/config/levels.xml
```

- https://wiki.docuteam.ch/doku.php?id=docuteam:packer_250_config#metadaten-elemente
- https://wiki.docuteam.ch/doku.php?id=docuteam:packer_250_config#verzeichnungsebenen
- https://wiki.docuteam.ch/doku.php?id=docuteam:packer_250_config#abbildung_der_beschreibenden_metadaten_als_encoded_archival_description_ead

Exercise 1: MetadataElements

- **Add a new** `MetadataElement` **for the accessor** `author`
- **Add a new** `LevelMetadataElement` **for the accessor** `author` **to the Level** «Teildossier»
- **Define allowed values for the accessor** `accessRestrictionIsPublic`
- **Define a defaultExpression for the accessor** `accessRestrictionIsPublic` **and** `processInfoDate`

Exercise 2: Levels

- Add a new Level «MyNewLevel»
 - «MyNewLevel» should be available as sublevel of «Unterbestand» and «Undefiniert»
 - «MyNewLevel» should have the following LevelMetadataElements:
 - refCode
 - unitTitle
 - scopeContent

Exercise 3: LevelMetadataElements

- Make the LevelMetadataElement `comment` repeatable in all Levels

levels.xml

Things to keep in mind:

- Keep `levels.xml` in docuteam packer, docuteam feeder and docuteam rservices (docuteamOAIS) in sync

Translations

```
docuteam packer.app/Contents/docuteam  
packer/resources/translations/Translation  
s_XY.properties
```

- **key-value pairs, for ex.:**
sopeContent = 3.1 Form und Inhalt
- **Section**
Dynamic Metadata Element names

Exercise 4: translations

- Change the translation for the accessors
`origination` **and** `scopeContent`

docuteamPacker.properties

```
docuteam packer.app/Contents/docuteam  
packer/config/docuteamPacker.properties
```

- https://wiki.docuteam.ch/doku.php?id=docuteam:packer_250_config#config_docuteampackerproperties

Exercise 5: docuteamPacker.properties

- Change the default checksum algorithm
- Reduce the number of backups

Kontakt

Thomas Bernhart

t.bernhart@docuteam.ch

+41 56 511 11 47

[@tomcbe](#)

Frédéric Noyer

f.noyer@docuteam.ch

+41 21 510 11 33

[@we_aRchieve](#) / [LinkedIn](#)

Docuteam GmbH

Im Langacker 16

5405 Baden-Dättwil

[@DocuteamCH](#)

Avenue de Grandson 48

1400 Yverdon-les-Bains